





# CERTIFICATE OF LOCATION OF GOVERNMENT CORNER

County of Anoka

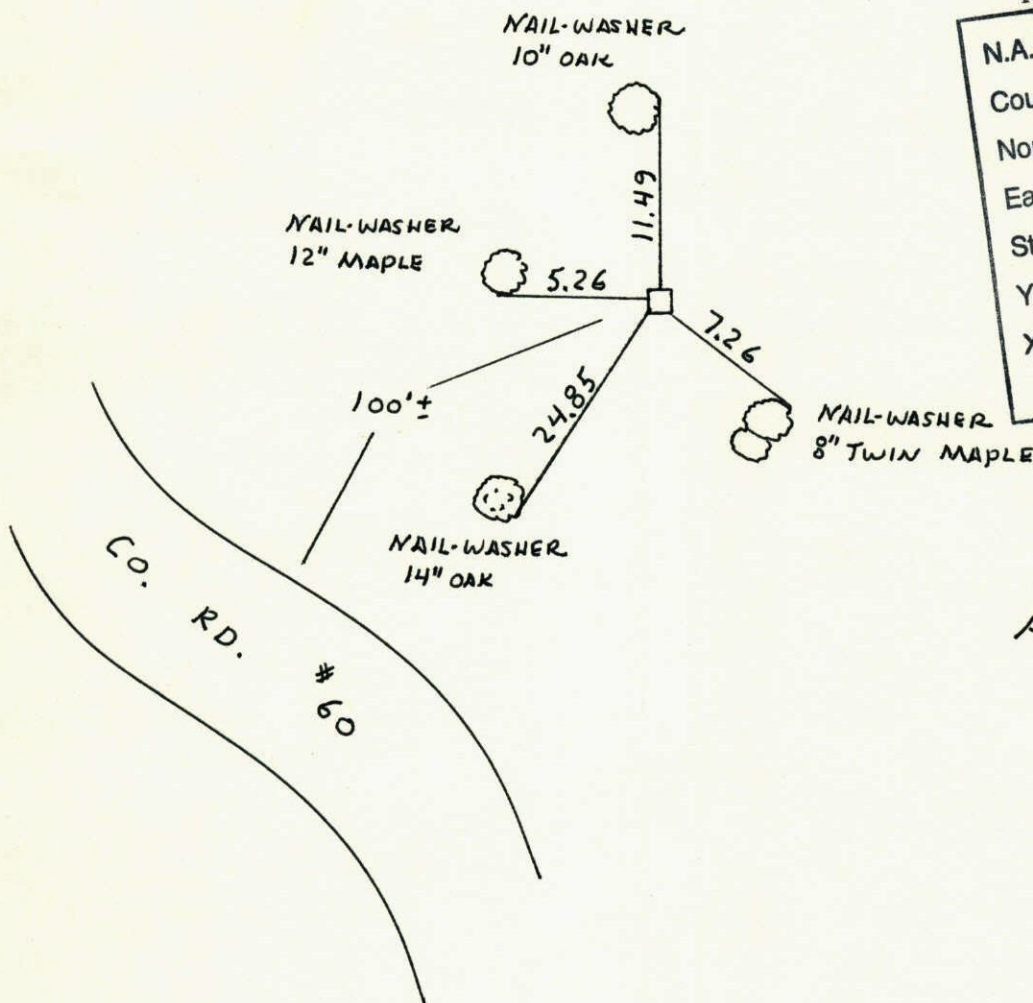
State of Minnesota

1/16 COR. S. LINE Corner of Sec. 10 Township 32 Range 23  
 of SE 1/4

I hereby certify that on the 13<sup>TH</sup> day of FEB., 1961, I found the described corner which was evidenced by 6" x 6" GRANITE

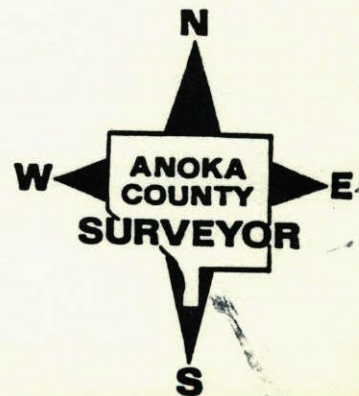
and I further certify that to perpetuate the location of said corner, I did, at the exact location thereof, place a permanent marker consisting of SAME

which reference or witness monuments are located in the manner following:



N.A.D.	1983	Co-ordinates
County	Project	Co-ordinates
Northing		<u>185327.7554</u>
Easting		<u>520147.4813</u>
State Plane Co-ordinates		
Y _____		
X _____		
Date _____		

Revised date	Revised date	Revised date
6-25-81		
11-19-91		





1/16 COR. S. LINE OF SE 1/4 SEC. 10 T32 R23

RETIED GRANITE

11-19-91  
H. LARSON  
B. KLENZ  
M. STEWART



FIELD

N+W  
10" OAK

N+W  
12" MAPLE

N+W  
14" OAK

N+W  
8" TWIN  
MAPLE

6.11

5.26

7.26

100'±

CO. RD. # 60

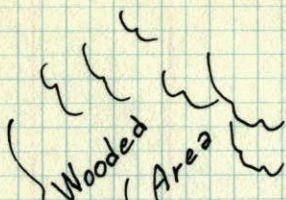
FIELD

NO. 448

TELETYPE

1/16 Cor. On S. Line Of S.E. 1/4 Sec 10-T32-R23

Retied 6"x6" Granite Monument



Tie Check  
June 9 1975  
D. Dahl  
B. Sannerud  
G. Adams

Nail & Washer  
11" Elm

5" Oak  
N+W

10" Birch  
N+W

NAIL & WASHER  
10" MAPLE

10" Twin Oak  
N+W

5" Twin  
Maple  
NEW N. & W.

{ Granite 200'± }  
From Road To West

Field

TIE CHECK  
July 16, 1984  
G. Lips  
D. Ross  
R. Bennett

7-11-1974  
H. Larson  
J. Boettcher  
B. Schaffer  
Temp. 76°  
Tape # 14

Tie Checks  
June 12, 1978  
D. Dahl  
J. Stephens  
M. Korman

ROLAND W. ANDERSON  
COUNTY SURVEYOR  
ANOKA COUNTY, MINNESOTA

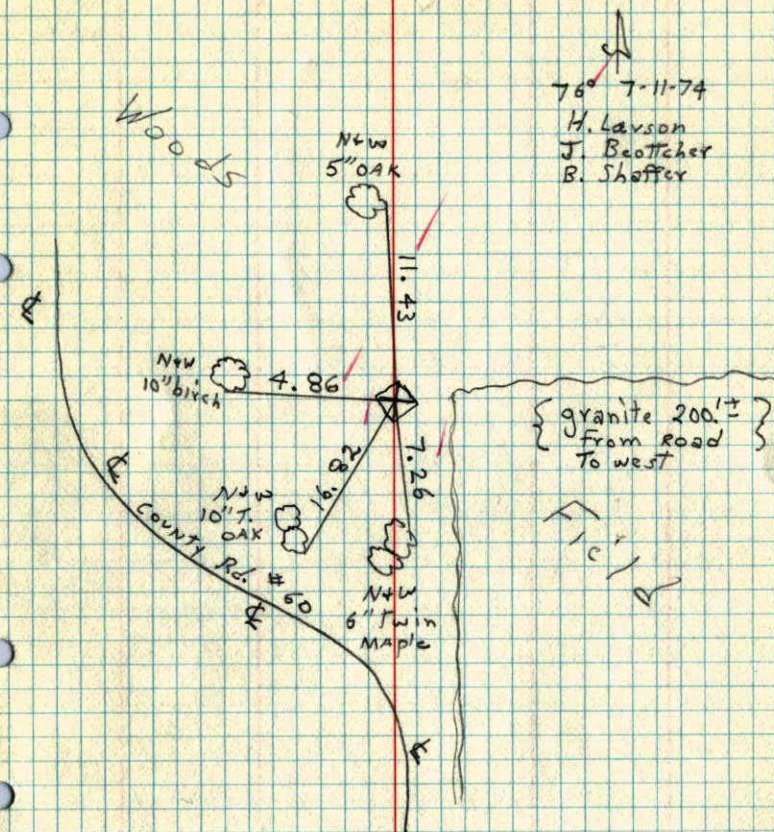
TEMPERATURE CORRECTED  
AND HORIZONTALLY  
TAPED MEASUREMENTS



1/16 cor. on South Line of SE 1/4

Sec. 10 T32 R23

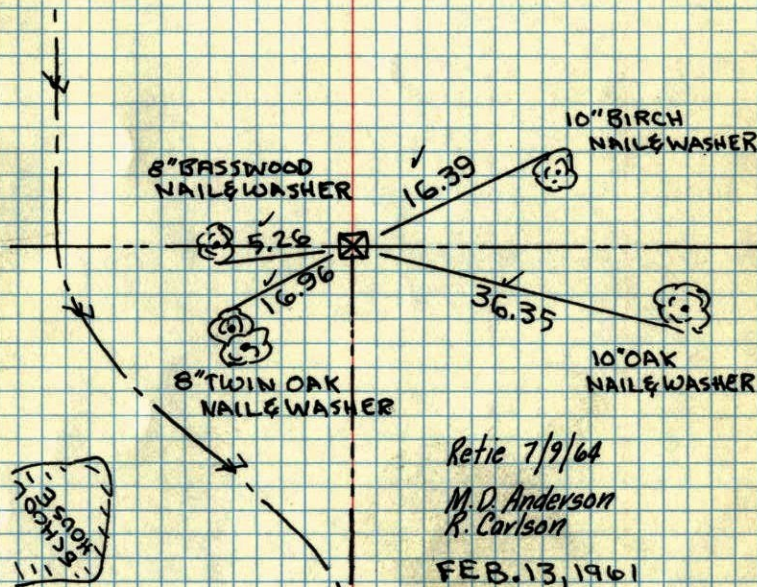
Retied 6"x6" Granite monument.



1/16 Cor. So. Line of SE 1/4

Sec. 10-32-23

FOUND GRANITE MONUMENT (6"x6") UP 0.5'



Retie 7/9/64

M. D. Anderson  
R. Carlson

FEB. 13, 1961

R. FREEMAN  
M. ANDERSON

TEMPERATURE CORRECTED  
AND HORIZONTALLY  
TAPED MEASUREMENTS

ROLAND W. ANDERSON  
COUNTY SURVEYOR  
ANOKA COUNTY, MINNESOTA



13 Feb 1961  
Freeman Anderson  
+ 36°

1/16 Cor on So. Line of SE 1/4 Sec 14-32-23  
Ham Lake -  
Found 6"x6" Granite Mon. up 0.5'

